

FLAT DRYING A MERINO WOOL SWEATER

- Do not place a wet Merino wool sweater on a hanger to dry as this can lead to stretching and can also cause "humps" to form on the shoulders of the sweater
- Place on a lint free towel and allow the sweater to dry in the air naturally. Alternatively use garment screens, which are designed to lay over a bath tub
- Gently shape and remove as many folds or creases as possible
- Avoid any direct heat or sunlight as this can cause yellowing



IRONING MERINO WOOL SWEATERS

Should you wish to iron your Merino wool sweater:

- Lay sweater flat, resize and shape gently by hand
 - Spray the garment with a little water before applying the iron, or use the steam function on the iron - the recommended heat setting is medium to dry in the air naturally.
- DO NOT**
- Press down on the garment too firmly as this can create a shine
 - Leave the iron on the garment for any length of time as this can scorch the sweater
 - Use ironing aids such as spray-on starch, softeners or conditioners

After ironing allow the garment to condition for a period of 5 minutes before folding and storing.

STORING

- Before storing ensure your Merino wool sweater is completely dry as dampness can lead to mildew growth
- Always store your Merino wool sweater in a cool dry place
- If storing in tissue paper ensure that the paper is colourless and acid free
- Never store in direct sunlight as this may cause the colour to fade or yellow
- If the only option is to store on a hanger, it is recommended to use the type which are specially designed for sweaters, which are broad and padded to support and spread the weight of the garment

FOLDING

It is best to store sweaters folded rather than on a hanger, hanging for any length of time can lead to stretching or humps forming on the shoulders of the garment.



Step 1: turn your sweater right side out and lay flat, face down



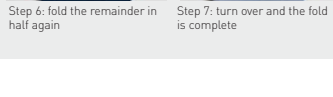
Step 2: fold the side seam towards the middle of the garment, the fold should be approximately 1/4 of the way across the garment



Step 3: bring the sleeve on the folded side down to align with the fold created in step 2



Step 4: repeat steps 2 & 3 on other side of sweater



Step 5: fold a small section about 1/3 of the sweater from the bottom of the garment up



Step 6: fold the remainder in half again



Step 7: turn over and the fold is complete

MOTH DAMAGE

All wool fabrics are at risk of damage caused by moths, particularly in the summer months.

The female moth lays her eggs on wool, when the larvae hatch they feed on the wool fibres to survive.

To protect your Merino wool sweater from the risk of moth damage:

- Launder prior to storage because moths are attracted to soil or dirt
- Use a moth deterrent. Traditional moth balls use a pungent odour (naphthalene) to deter moths. Today there are moth proofing agents which are effective and odourless
- Store your dry sweater in a sealed container or bag

PILLING

All knitted fabrics are susceptible to pilling which is the formation of small balls of fibre called "pills" on the surface of the sweater. The result is an unsightly, worn out appearance.

To avoid pills, when laundering, turn sweater inside and use only small amounts of softeners.

To remove pills a comb or small battery operated "fabric shaver" can be used to gently remove the pills.

www.wool.com



WOOLMARK

Disclaimer: The Woolmark Company makes no representations about the content presented. Specifically, Woolmark does not warrant, guarantee or make any representations regarding the correctness, accuracy, reliability, currency, or any other aspects regarding characteristics or use of the information presented in Woolmark materials. The user accepts sole responsibility and risk associated with the use and results of Woolmark materials, irrespective of the purpose to which such use or results are applied. Users should confirm information from an appropriate and relevant source if it is of sufficient importance for them to do so. In no event shall Woolmark be liable for any loss or damages (including without limitation special, indirect or consequential damages), whether in an action of contract, negligence or tort, arising out of or in connection with the use or performance of Woolmark materials. Copyright © 2010.



CARING FOR YOUR MERINO WOOL SWEATER

MERINO WOOL IS...

NATURAL - Merino wool is the natural fibre choice, made of a protein called keratin, the same protein as human hair.

BIODEGRADABLE - under the right conditions Merino wool fibre takes only a few years to decompose.

RENEWABLE - every year an Australian Merino sheep grows a fleece, which can be removed without harm to the animal.

RESILIENT - Merino wool fibres return to their original state when bent or stretched, making sweaters that retain their shape during wear and care.

SOFT - Australian Merino sheep are renowned for producing the finest wool. This fineness is the reason Merino wool garments are soft to the touch and will not irritate even when worn next to your skin.

COMFORTABLE - Merino wool has the ability to respond to changes in temperature - the absorbent core of each wool fibre has the capacity to absorb up to 35% of its own weight in moisture (vapour) allowing humidity to move away from the skin and evaporate.

EASY TO CARE FOR - a large range of Merino wool sweaters are available to satisfy consumer demand for easy care garments.

Woolmark "Machine Washable" and "Total Easy Care" wool technology builds on Merino wool's unique natural attributes, creating garments that can be machine laundered at home. Look for the following tags on Merino wool sweaters:

CARING FOR YOUR MERINO WOOL SWEATER

The following pages offer some simple advice for looking after your Merino wool sweater.

Care instructions vary depending upon the style and type of garment. Therefore, before laundering always read and follow the instructions on the care claim label. This label is normally found sewn into the left hand side seam of all garments.

Care claims for Merino wool sweaters generally fall under the following four options:



DRY CLEAN ONLY

Clean by a reputable dry cleaner only.



HAND WASH

Hand wash at approximately 30°C, using a gentle detergent, rinse well and flat dry.



MACHINE WASHABLE

Wash on a wool, gentle or delicate cycle (maximum 40°C) and flat dry.



TOTAL EASY CARE

Follow machine washable instructions and tumble dry on a low or delicate setting.

TREATING STAINS

When treating stained Merino wool sweaters at home, the key to successful removal is speed, stains should be treated immediately to reduce the risk of them becoming permanent.

GENERAL TIPS

- Never apply heat in any form, this will set most stains making them difficult to remove
- Use solvents or solvent based stain removers in a well ventilated area, following the safety precautions recommended by the manufacturer
- When using a stain remover adopt a dabbing action, rubbing the fabric may cause damage

ALCOHOLIC DRINKS

Dab gently with an absorbent cloth to remove as much excess liquid as possible. Sponge the area sparingly with a mixture of warm water and surgical spirit in equal parts.

BLACK COFFEE

Mix alcohol and white vinegar in equal parts, soak a cloth in the solution and lightly dab the stained area before pressing gently with an absorbent cloth.

BLOOD

Remove excess blood immediately with a damp sponge and then gently dab the area using undiluted vinegar followed by cold water.

BUTTER / GREASE / SAUCES

If a greasy mark forms, firstly scrape the surface of the stain with a spoon or knife to remove any excess oil. Then soak a cloth in proprietary dry cleaning fluid and gently dab the area.

CHOCOLATE / WHITE COFFEE / TEA

Dab gently around the edge of the stain with a cloth soaked in white spirit before following instructions for black coffee.

EGG / MILK

Dab gently with a cloth soaked in white spirit. Repeat the action with a cloth soaked in diluted white vinegar.

FRUIT / FRUIT JUICE / RED WINE

Immediately dab the stain with a mixture of surgical spirit and water (3:1 ratio).

GRASS

Apply soap very carefully (using a mild tablet soap or flakes) or dab gently with a cloth soaked in surgical spirit.

INK / BALL POINT PEN

Dab gently with a cloth soaked in white spirit. Repeat the action with a cloth soaked in diluted white vinegar or surgical spirit.

LIPSTICK / MAKE-UP / SHOE POLISH

Dab gently with a cloth soaked in turpentine or spot cleaning spray or fluid. Rinse with mild soapy water.

GENERAL LAUNDERING INSTRUCTIONS

Irrespective of the method, it is recommended that sweaters are turned inside out for laundering, this will prolong the "as new" surface appearance of the sweater.



To avoid colour "bleeding" never launder pale coloured sweaters with dark or bright colours, also do not allow wet garments to come in contact with each other after washing.



WASHING GUIDELINES

- Use a gentle detergent that has been developed specifically for fine fibres such as Merino wool. This will assist in maintaining the appearance and longevity of your Merino wool sweater. Look for the Woolmark logo on the packaging of the detergent liquid, powder or flakes to identify products which are approved for wool machine wash programs
- Pre-dissolve powdered detergents before adding to the wash as concentrated deposits of detergent can create holes
- Avoid "Bio" detergents containing enzymes
- Never use chlorine bleach or oxygen based detergents
- Use minimal amounts of softeners or conditioners in the final rinse, excessive amounts of softener have been linked to pilling
- Avoid excessive agitation, squeezing or wringing by hand - these actions may cause shrinkage or distortion of the garment



Machine Washable



Total Easy Care