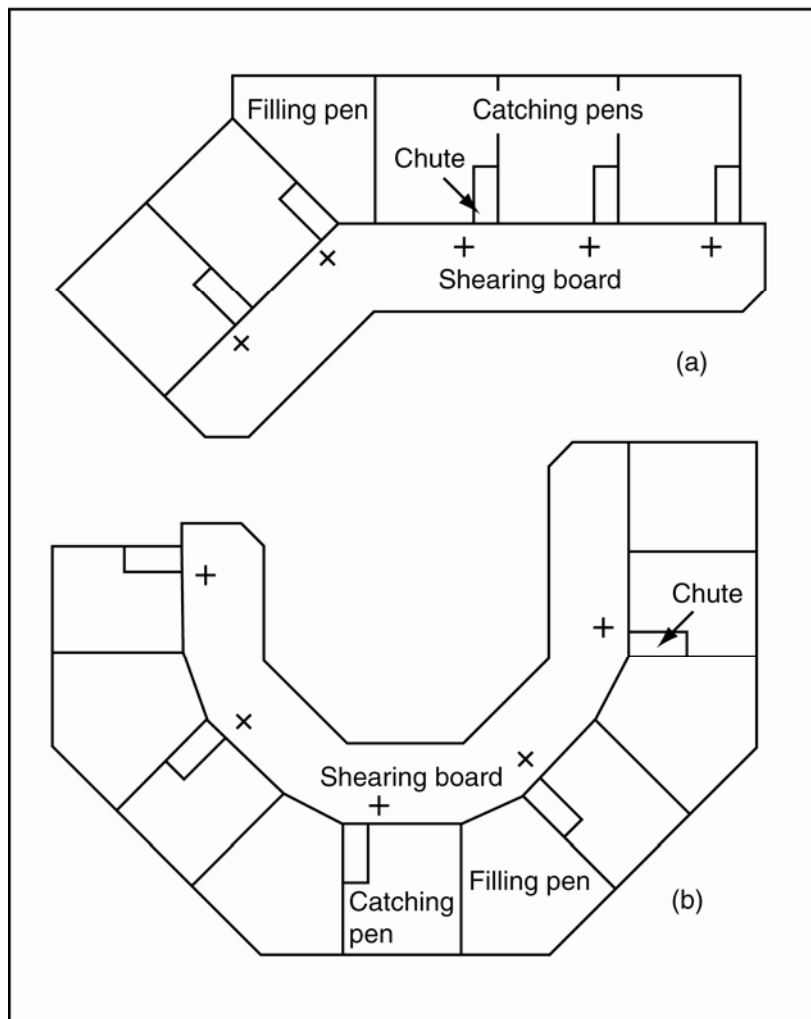


## Curved Board

Curved boards are a derivation of the catch behind/centreboard/open plan shed. Again care should be taken to eliminate dragging sheep around corners – right to left for right handed shearers and left to right for left handed shearers. Designs and from Barber & Freeman:

Figure 4.3. Examples of bent or curved shearing board layouts.



From Barber & Freeman

## Advantages

- Marginally better drag path for right handed shearers; and
- Same as for the raised board, although it can improve productivity through reduced walking for shedhands.

## Disadvantages

- Same as for the raised board; and
- Need to take care in design so that catching pens are of similar size and dimension and the shearing stand is correctly positioned and designed to give a straighter drag path.